

Fertil Five®

Fertil Five® is the fast and accurate solution for controlled distribution of granular and microgranular products. The Fertil Five is easy to operate, with a left handed version on request. Recommended for all situations where controlled distribution of granulates is required, such as production of ornamental plants, fruit production, landscaping and forestry.

Characteristics

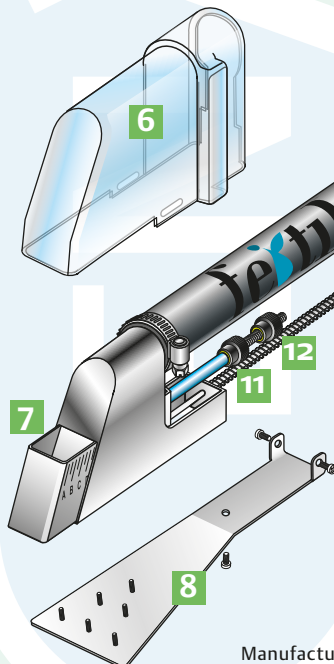
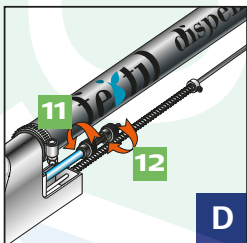
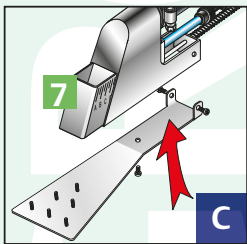
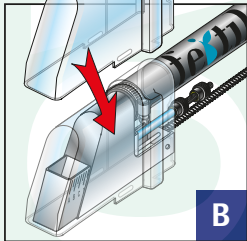
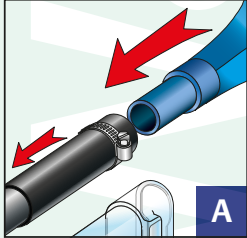
PRECISE: Fertil Five consists of a tank and a high precision dosage mechanism that can be installed stepless between 2 and 25 grams for exact and uniform plant nutrition.

FAST AND ECONOMIC OPERATION:

Fertil Five has been developed by studying the behaviour of granular product in order to improve speed and effectiveness. The tank has been designed to support the free fall of granulate. Its dosage mechanism delivers 1500-5000 dosages per hour, without wasting costly fertilizer or other granular products.

LIGHT AND COMFORTABLE: Fertil Five is a lightweight and ergonomic device, it can easily be refilled without taking it off and putting it down. It can be used without problems over an extended period of time.

QUALITY AND ECOLOGY: Fertil Five combines the lightness with the solidity and safety of stainless steel, providing durability and minimum maintenance. It applies granular products such as fertilizer without hand-contact with minimum losses.



ACCESORIES INCLUDED:
 Comfortable adjustable shoulder strap
 Granulate distributor blade
 Moisture protection cap

Operating manual Fertil Dispenser®

- Picture A. Attach the black tube (9) to the tank (2) using the clamps (4) and attach the dosage pipe (5) to the black tube (9).
- Adjust the shoulder strap (3) to the correct length.
- Picture D: Setting the required dosage: Press the tumb-handle (10) until the first resistance. Turn the screw (11) to the front for larger amount, to the back for a smaller amount. The opening of the dosage volume (7), will increase or decrease. Check the amount of fertilizer installed, on a precise balance for every character on the scale (7). As soon as the required dosage has been set, block the first installation-screw (11) by turning the second screw (12) tightly to the installation-screw (11).
- Once the required dosage is set, fill up the tank (2) with fertilizer, close the tank with the supplied lid (1) and start working.
- Picture B. In case of humid working conditions, place the moisture protection (6) over the dosage mechanism (7) before operating.
- Picture C. In case distribution of the fertilizer is preferred, attach the spreader (8) to the dosage mechanism (7) before operating.

Manufactured by Simeoni TecnoGreen

simeoni
tecnogreen

Distributed by Engrow BV

EN/GROW®

info@engrow.nl